

Floor Accessories

Floor Mounting Brackets

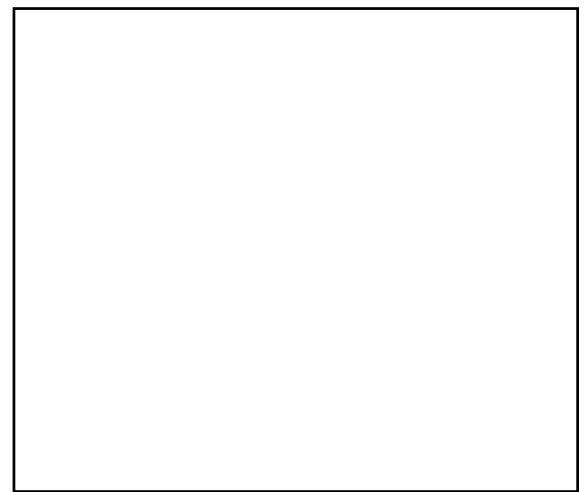
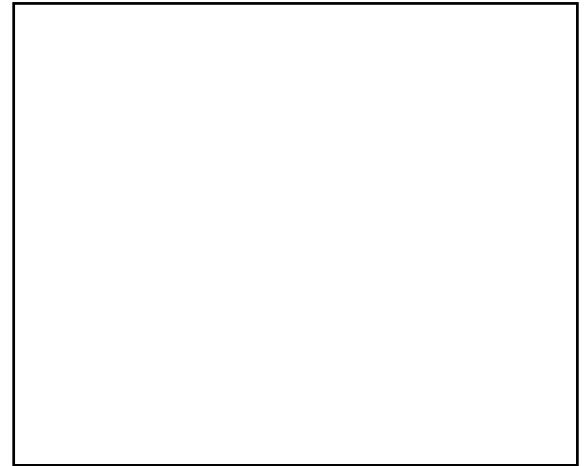
Floor Mounting Brackets are used to attach extrusion profiles to the floor. The brackets allow height adjustment (for leveling).

Material: 6061-T6 Aluminum Alloy, Clear Anodized

Part No.	Description	Fastener Holes	Weight	
			kg	lb
TSA4010	40 x 40 and 40 x 80	2	.49	1.07
TSA8010	40 x 80 and 80 x 80	4	1.00	2.19

FASTENING SETS

Part No.	Fastening Set No.
TSA4010	TSF2540
TSA8010	(2) TSF2540



Leveling Floor Mounting Bracket

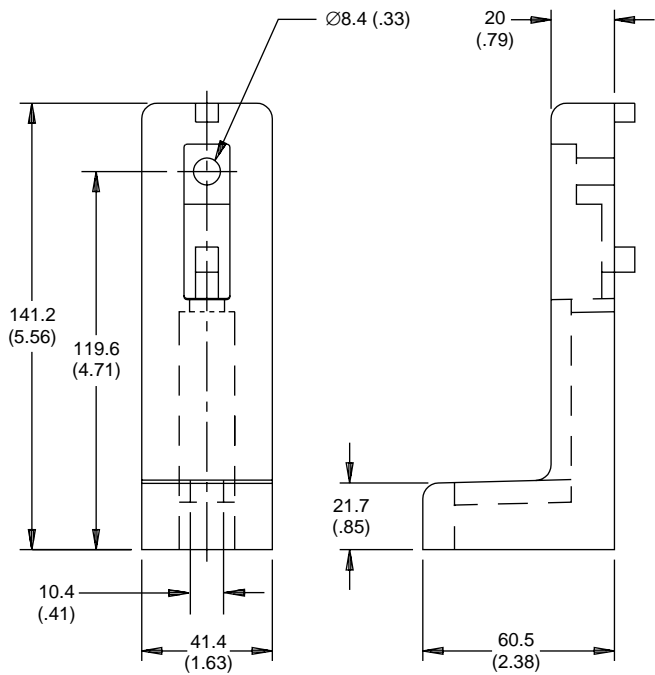
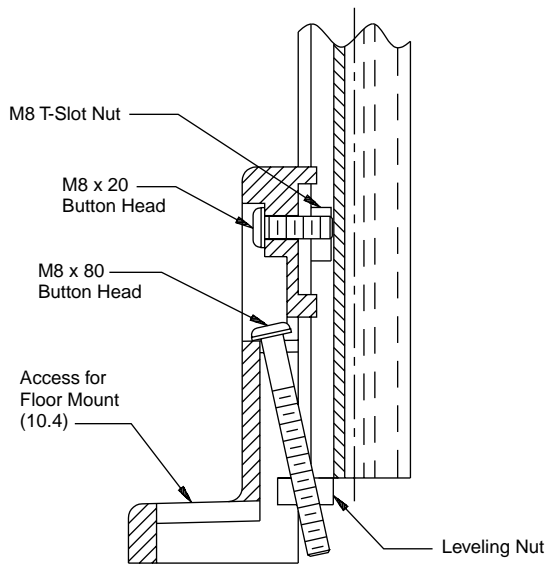
This bracket provides very convenient height adjustment. The screw adjustment is easily accessible from the top (not the bottom). This part also eliminates the machining normally required for a leveling foot. **All fasteners included.**

Part No.: TSA4011

Material: Cast Aluminum

Color: Black

Weight: .35 kg (.78 lb)



Note: All dimensions in mm (in)

Floor Accessories

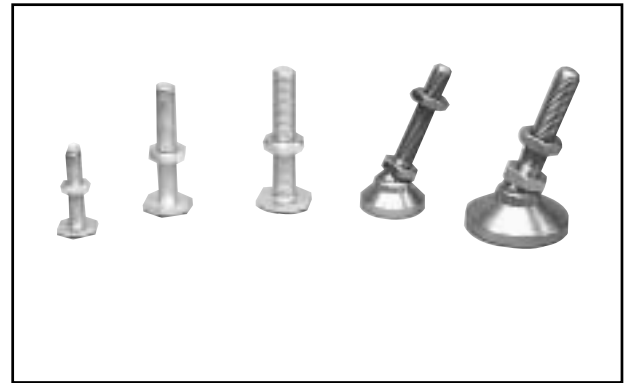
Leveling Feet

These levelers provide height adjustment for a structure. Swivel and economy styles are available.

Machining Required: Profiles can be pre-tapped if necessary. Refer to page machining section.

Design Tip: Profiles cannot be pre-tapped for M12 foot. Separate base/anchor plate is required.

Note: TSV4040 profiles can accept only an M8 foot. If a swivel foot is desired for these profiles, see below for M8 swivel foot with friction pad.



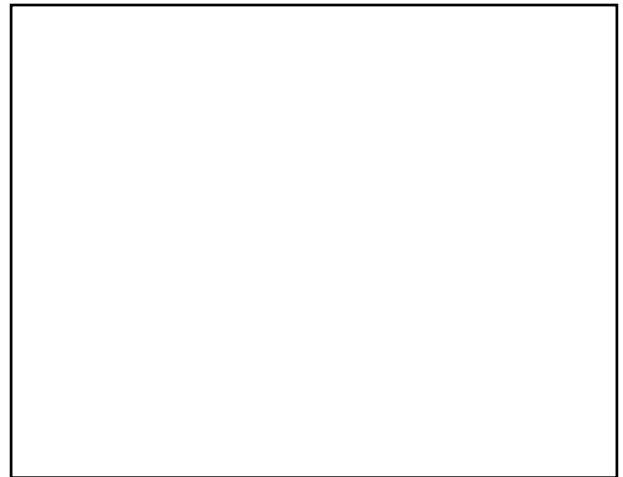
Part No.	Description	Overall Length (mm)	Material	Load Capacity		Weight	
				kg	lb	kg	lb
TSA0040	M10 x 50 mm with swivel	75	Hardened Steel, Zinc Plated	1182	2600	.10	.23
TSA0042	M12 x 50 mm with swivel	80	Hardened Steel, Zinc Plated	1727	3800	.23	.52
TSA0044	M8 x 40 mm	43	Carbon Steel, Zinc Plated	1160	2550	.02	.05
TSA0046	M10 x 50 mm	55	Carbon Steel, Zinc Plated	1160	2550	.05	.10
TSA0048	M12 x 50 mm	70	Carbon Steel, Zinc Plated	2136	4700	.07	.15

Leveling Feet with Friction Pads

The M8 leveler provides height adjustment. A swivel pivots up to 20° for floors which aren't level. This threads directly into the end of a tapped profile. A rubber pad on the bottom provides improved traction. Jam nut included.

The M10 leveling foot provides height adjustment. A swivel pivots up to 20° for floors which aren't level. This threads directly to a tapped profile. A rubber pad on the bottom provides improved friction. Two holes allow for bolting to floor. Jam nut included.

Machining Required: Profiles can be pre-tapped for M8 or M10 if necessary. Refer to Machining section.



Part No.	Description	Overall Length (mm)	Material	Load Capacity		Weight	
				kg	lb	kg	lb
TSA0036	M8 x 26mm	53	Carbon Steel, Zinc Plated, Rubber Pad	91	200	.05	.10
TSA0038	M10 x 102mm*	127	Carbon Steel, Zinc Plated, Rubber Pad	365	803	.05	.10
TSA0041	M10 x 102mm*	127	Carbon Steel, Nickel Plated, Nylon Base	113	248	.11	.25
TSA0045	M10 x 127mm*	152	Carbon Steel, Nickel Plated, Nylon Base	113	248	.13	.28

* Not available for TSV4040 and all 28mm profiles.

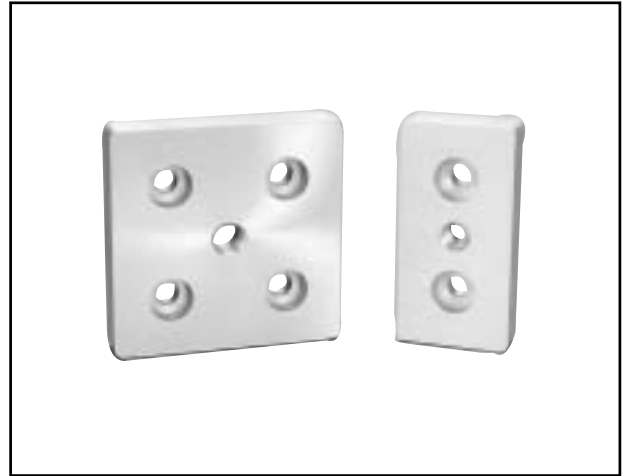
Floor Accessories

Base Plates

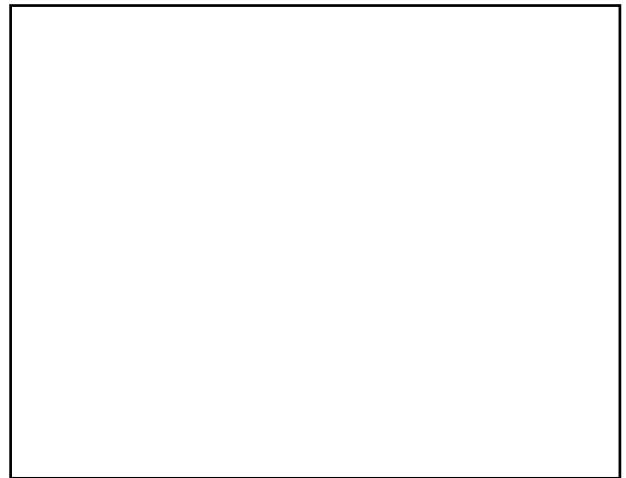
Base plates are used to mount leveling feet or king-pin mount casters to the bottom of an extrusion profile. The plate attaches to the tapped hole(s) in the end of the profile; a tapped center hole accepts the leveling foot or caster being mounted. The plate can also be used as a lifting point. In this case, the plate would be mounted to the top of an extrusion profile and an eye-bolt would be threaded into the center tapped hole of the plate for handling.

Material: 6061-T6 Aluminum Alloy, Clear Anodized

Machining Required: Base plates attach to tapped holes in the profile end.



Part No.	"A"	Profile	Weight		Tap Profile End Machining Service Part No.
			kg	lb	
TSA4000	M8	40 x 80	.11	.25	TSE0038
TSA4002	M10	40 x 80	.11	.25	TSE0038
TSA4004	M12	40 x 80	.11	.25	TSE0038
TSA8002	M10	80 x 80	.23	.50	TSE0040
TSA8004	M12	80 x 80	.22	.49	TSE0040



FASTENING SETS

Base Plate No.	Fastening Set No.
TSA4000, TSA4002, TSA4004	(2) TSF2542
TSA8002, TSA8004, TSA8008	(4) TSF2542

Floor Accessories

Anchor Plates

Anchor plates are similar to base plates, with the addition of a thru-hole for anchoring the plate to the floor.

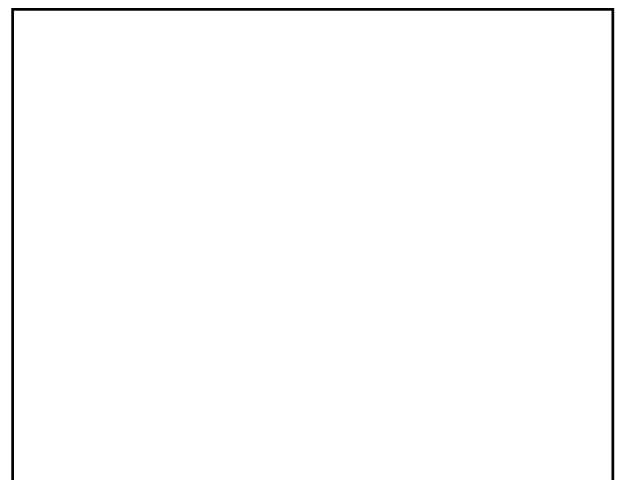
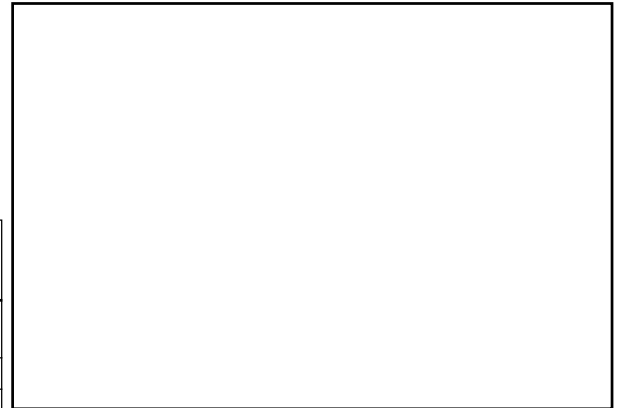
Material: 6061-T6 Aluminum Alloy, Clear Anodized

Part No.	"A"	Profile	Weight		Tap Profile End Machining Service Part No.
			kg	lb	
TSA4020	N/A*	40 x 40	.11	.25	TSE0036 or TSE0042
TSA4022	M10	40 x 80	.16	.35	TSE0038
TSA4024	M12	40 x 80	.16	.35	TSE0038
TSA8024	M12	80 x 80	.33	.72	TSE0040

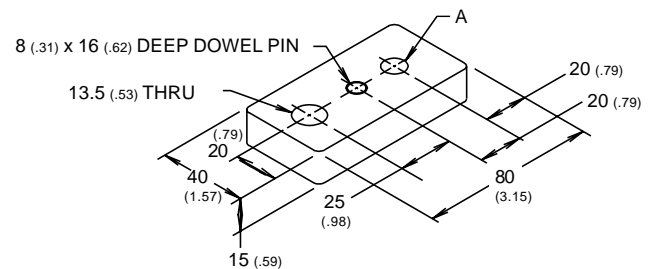
* Thru hole will accept M8 or M10 leveling foot. Vertical post is also tapped to accept leveling foot.

FASTENING SETS

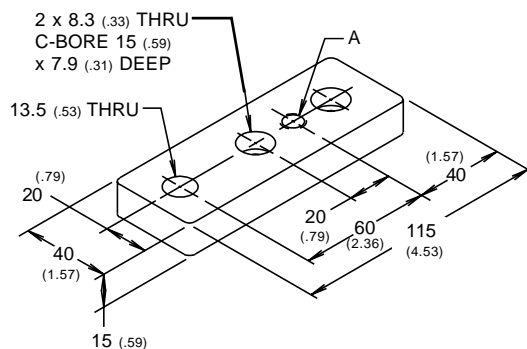
Base Plate No.	Fastening Set No.
TSA4020	(1) TSF2542
TSA4022 & TSA4024	(2) TSF2542
TSA8024	(4) TSF2542



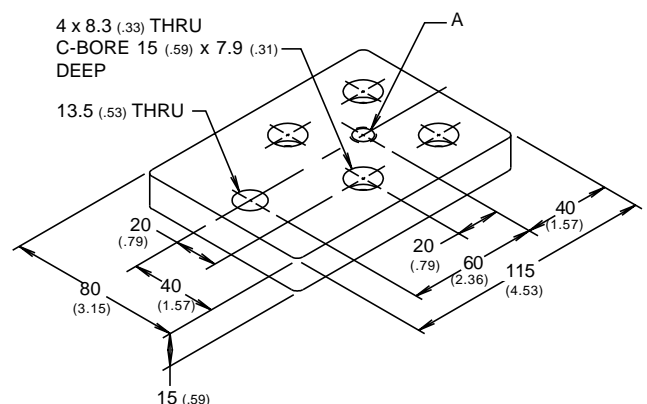
TSA4020



TSA4022 or TSA4024



TSA8024



Note: All dimensions in mm (in)

Floor Accessories

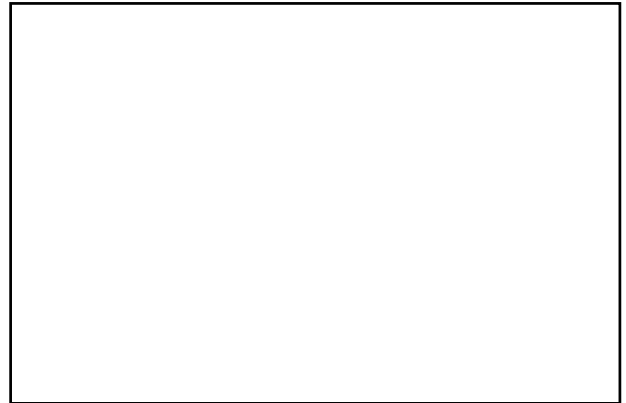
Corner Anchor/Leveling Plate

A corner anchor/leveling plate may be mounted at an angle between two horizontal profiles. This plate accommodates leveling feet, floor anchor bolts, king pin casters, etc.

Part No.: TSA0094

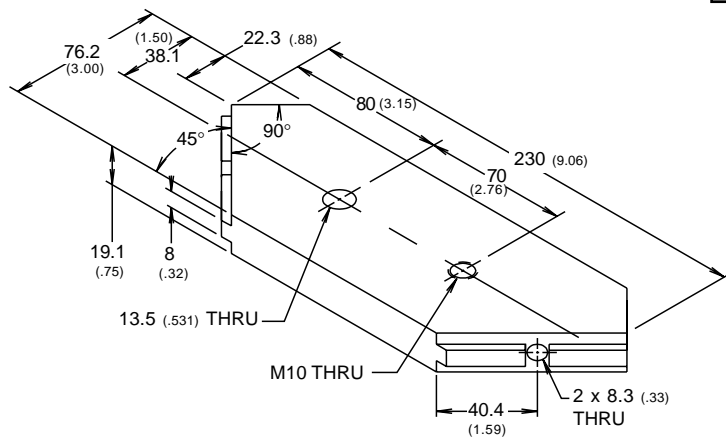
Material: 6061-T6 Aluminum Alloy, Clear Anodized

Weight: .48 kg (1.06 lb)



FASTENING SET

Base Plate No.	Fastening Set No.
TSA0094	(2) TSF2544



Floor Accessories

Floor Mounting Plates

Floor Mounting Plates are used to attach extrusion profiles to the floor. They are designed for 4080 extrusions and 8080 extrusions.

Material: 6061-T6 Aluminum Alloy, Clear Anodized

Machining Required: Floor Mounting Plates attach to tapped holes in the profile end.

Part No	Description	Fasteners Holes
TSA4080	40x80 extrusions	4
TSA8080	80x80 extrusions	4

TSA4080

TSA8080